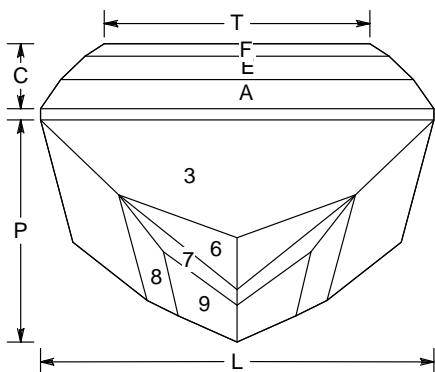


84 &lt;96&gt; 12



## Goran

By Willie Klaja

Angles for R.I. = 1.540

37 + 4 girdles = 41 facets

2-fold, mirror-image symmetry

96 index

$L/W = 1.400$   $T/W = 0.945$   $U/W = 0.550$

$P/W = 0.790$   $C/W = 0.231$

$Vol./W^3 = 0.819$

## PAVILION

1	90.00°	96-48	Determine L/W
2	90.00°	24-72	-II-
3	75.10°	96-48	Cut 2 steps, equal depth.
4	75.10°	24-72	-II-
5	46.20°	13-35-61-83	Cut to temporary centerpoint. Meet girdle.
6	51.20°	03-45-51-93	Make new temporary centerpoint.
7	43.17°	07-41-55-89	Make new centerpoint, again!
8	42.20°	09-39-57-87	Meet: centerpoint.
9	41.50°	08-40-56-88	Float in. Replaces previous centerpoint.

## CROWN

A	56.08°	96-48	Level girdle
B	55.14°	24-72	-II-
C	44.00°	48	Make equal step.
D	44.00°	24-72	-II-
E	44.00°	96	-II-
F	32.26°	96-48	-II-
G	32.26°	24-72	-II-
H	0.00°	Table	Cut to approx 55% of WIDTH.

Untested. Designed for quartz. Variable L/W.

Inspired by the artwork of a buddy whos name is Goran.

C:\Users\wk\DOCUME~1\Gemstuff\SLIPNI~1\TESTCUT\GORANS~1\Goran.gem